

Low Profile & Low Range Pancake Tension & Compression **LOAD CELL**

DSCRC Series



- Capacities 200N to 2kN
- Stainless Steel Construction
- Low Profile Design
- Low Deflection
- High Natural Frequency
- Excellent Rejection of Extraneous Forces
- **3 YEAR WARRANTY**

Options Available

Other Ranges Available on request

Equivalents to other manufacturers' available

Full range of mounting options available, including:-

- Load Buttons
- Spherical Rod End Bearings
- Standard and Special Mounting Base

Aluminium Version

Integral Cable Version

Different Centre Thread Sizes (consult factory)

Fatigue Rated Version

Double Bridge Version

DESCRIPTION

The DSCRC series are low profile pancake type load cells suitable for both Weighing and Force Measurement applications.

Constructed from Stainless Steel, offering excellent corrosion resistance and improved zero force pass through performance over conventional steel products..

The load cell's design provides excellent resistance to extraneous forces, such as bending, side and torsional forces.

The load cell is used widely in material and fatigue testing applications, where a low physical height is required and forces are applied axially. The mounting bolts for all capacities are counterbored to prevent obstruction from the bolt heads. High frequency response is also a benefit with this load cell for dynamic force measurement applications, which is also complimented with excellent fatigue resistance.

As with all the other Applied Measurements sensors, they can be supplied complete with monitoring/control electronics and calibrated as a system (please refer to the Instrumentation datasheets).

Transducer Specialists...

APPLIED MEASUREMENTS LIMITED

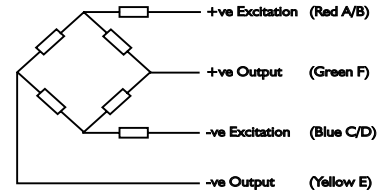
3 MERCURY HOUSE - CALLEVA PARK - ALDERMASTON - BERKSHIRE - RG7 8PN - UK

Tel: (+44) 0118 981 7339 Fax: (+44) 0118 981 9121 email: info@appmeas.co.uk Internet: www.appmeas.co.uk

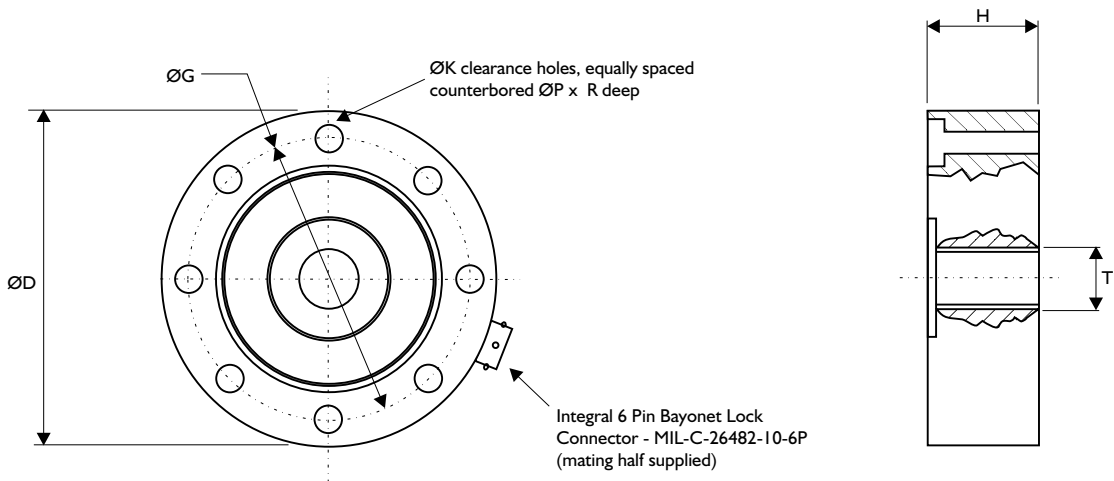


SPECIFICATION

Wiring Schematic Diagram



CHARACTERISTICS	DSCRC	UNITS
Rated Capacities:	200, 500, 1000, 2000	N kN
Rated Output:	2.0 nominal (1.0 on fatigue-rated versions)	mV/V
Non-Linearity:	<0.10	±% of Rated Output
Hysteresis:	<0.08	% of Rated Output
Repeatability:	<0.03	±% of Applied Load
Zero Balance:	<5.0	±% of Rated Output
Temperature Range: Operating	-20 to +80	°C
Compensated	0 to +60	°C
Temperature Effect: On Output	<0.005	±% of Applied Load/ °C
On Zero	<0.005	±% of Rated Capacity/ °C
Safe Overload:	150	% of Rated Capacity
Safe Sideload:	50	% of Rated Capacity
Ultimate Overload:	300	% of Rated Capacity
Excitation: Recommended	10	Volts AC or DC
Maximum	15	Volts AC or DC
Input Impedance:	375 nominal	Ohms
Output Impedance:	350 nominal	Ohms
Insulation Impedance:	>500	Megaohms
Deflection at Rated Capacity:	<0.05	mm
Construction:	Stainless Steel	
Environmental Protection:	IP65	
Connections:	6 Pin Integral Bayonet Lock Connector (MIL-C-26482-10-6P)	



All dimensions in mm

RANGE (N)	ØD	H	G	K	T	ØP	R
200, 500	76	25	60	6 off Ø6.2	M10 x 1.0	11	7
1000, 2000	76	25	60	6 off Ø6.2	M10 x 1.0	11	7

